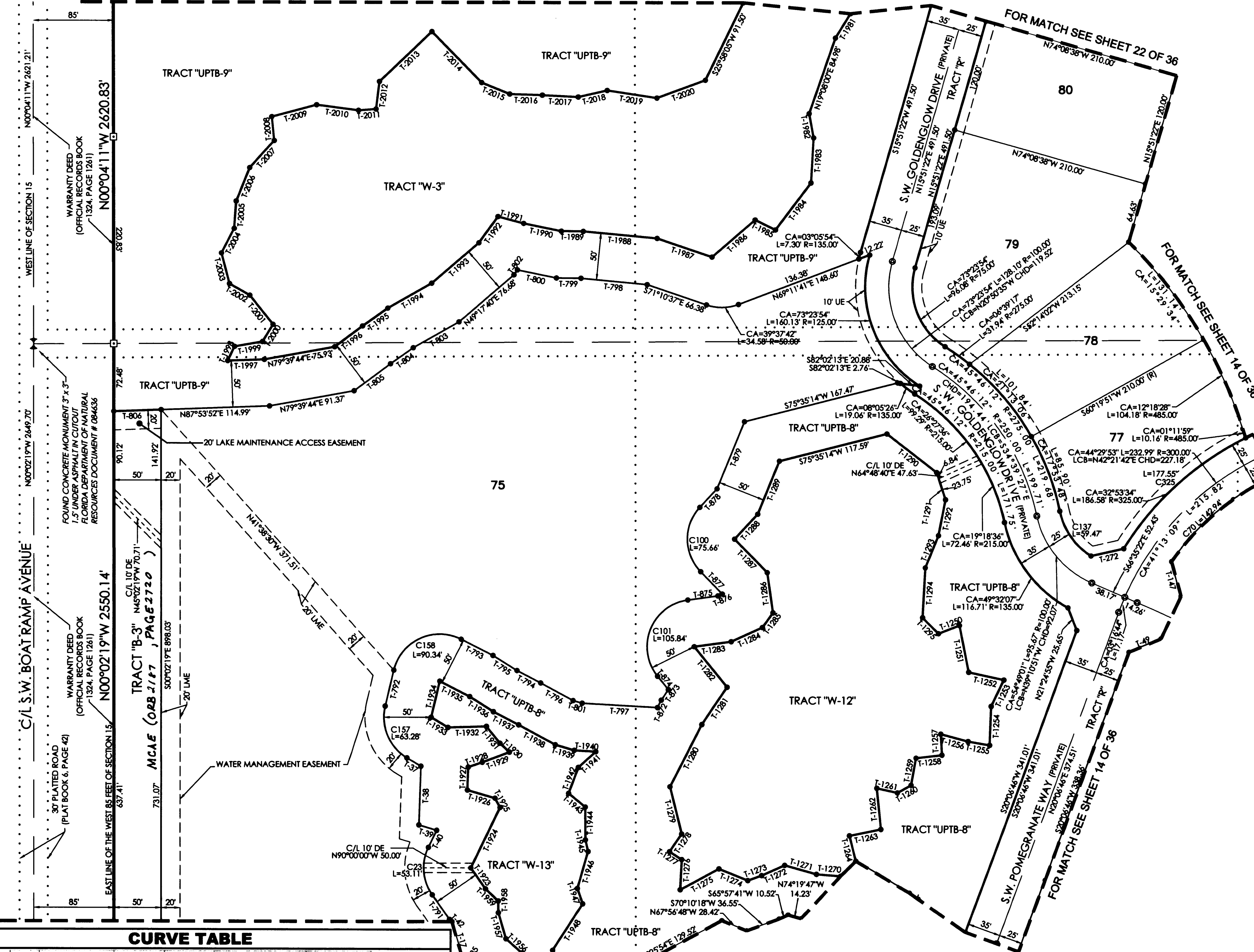


FOR MATCH SEE SHEET 23 OF 36

FOR MATCH SEE SHEET 22 OF 36

FOR MATCH SEE SHEET 14 OF 36

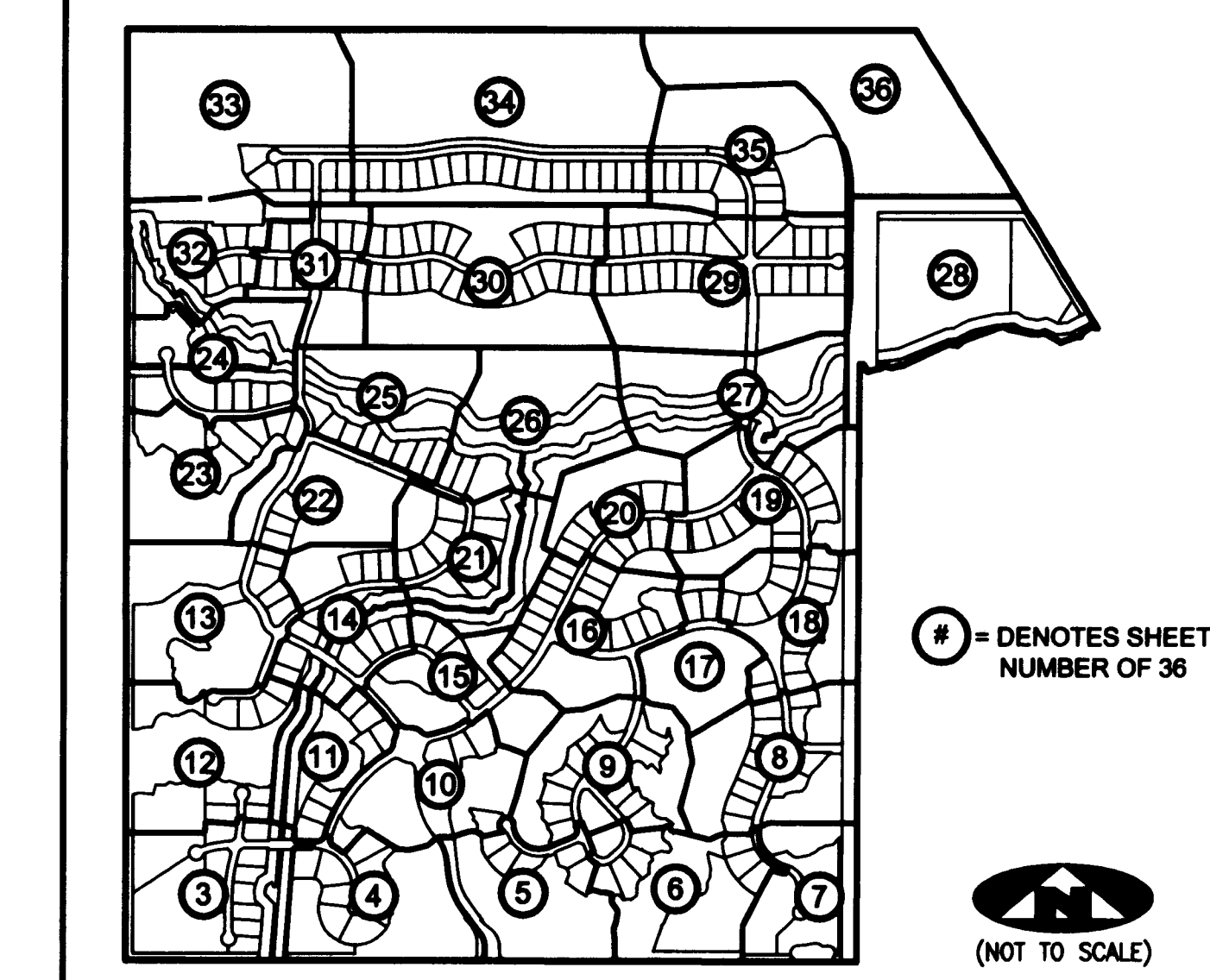
FOR MATCH SEE SHEET 12 OF 36



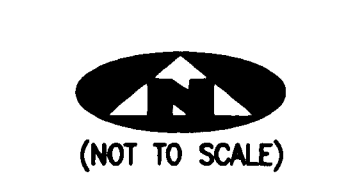
TANGENT TABLE

T-37 N59°06'36"W 17.28'	T-1273 N70°10'18"E 15.58'	T-1983 N03°14'45"E 48.35'
T-38 N01°54'20"E 62.30'	T-1274 S67°56'48"E 32.93'	T-1984 N36°48'04"E 62.87'
T-39 N73°55'54"W 19.64'	T-1275 N61°19'54"E 46.75'	T-1985 S65°33'59"E 24.05'
T-40 N25°45'55"E 20.14'	T-1276 S02°43'08"W 32.18'	T-1986 N48°52'41"E 60.53'
T-42 N46°05'34"W 3.57'	T-1277 S57°08'36"E 15.35'	T-1987 S71°10'37"E 61.43'
T-47 N56°03'33"E 32.27'	T-1278 S34°10'51"W 22.80'	T-1988 S84°34'10"E 78.44'
T-48 N21°24'55"W 33.15'	T-1279 S13°59'56"E 51.41'	T-1989 S89°32'29"E 23.39'
T-49 S67°19'24"W 36.69'	T-1280 S27°04'23"W 73.94'	T-1990 S78°24'09"E 40.81'
T-147 S15°18'40"E 38.38'	T-1281 S34°09'59"W 47.61'	T-1991 S74°57'40"E 28.04'
T-272 S77°15'27"W 35.69'	T-1282 S39°07'29"E 55.34'	T-1992 N35°48'43"E 34.68'
T-785 S32°22'17"W 2.26'	T-1283 S82°09'49"W 39.59'	T-1993 N49°17'40"E 65.98'
T-791 S35°05'29"E 31.97'	T-1284 S65°22'32"W 36.21'	T-1994 N60°13'59"E 53.51'
T-792 S13°23'57"W 39.00'	T-1285 S35°57'17"W 19.20'	T-1995 N54°31'40"E 32.60'
T-793 N63°04'30"W 37.99'	T-1286 S08°13'58"E 43.15'	T-1996 N53°01'28"E 37.12'
T-794 N62°38'49"W 28.20'	T-1287 S44°03'45"E 49.73'	T-1997 N87°53'52"E 38.88'
T-795 N57°42'36"W 29.92'	T-1288 S42°38'21"W 36.20'	T-1998 S25°25'43"W 16.87'
T-796 N61°43'38"W 39.18'	T-1289 S21°56'13"W 61.47'	T-1999 S79°59'51"W 30.19'
T-797 N86°45'13"W 79.90'	T-1290 N52°01'49"W 67.20'	T-2000 S31°03'37"W 21.45'
T-798 S84°34'10"E 70.39'	T-1291 N17°47'21"W 30.58'	T-2001 S38°30'47"E 29.42'
T-799 S89°32'29"E 26.09'	T-1292 N11°03'37"E 39.13'	T-2002 S60°12'18"E 24.89'
T-800 S78°24'09"E 42.09'	T-1293 N22°10'21"E 37.19'	T-2003 S14°26'51"E 33.73'
T-801 N74°03'46"W 9.95'	T-1294 N03°06'34"E 52.99'	T-2004 S27°15'11"W 29.48'
T-802 N35°48'43"E 6.41'	T-1295 N44°48'43"E 24.01'	T-2005 S04°02'23"W 29.35'
T-803 N60°13'59"E 55.80'	T-1296 S35°05'29"E 27.16'	T-2006 S21°46'01"W 38.67'
T-804 N54°31'40"E 29.46'	T-1297 S25°45'55"W 71.03'	T-2007 S74°59'23"W 49.20'
T-805 N33°01'28"E 48.31'	T-1298 S73°35'54"E 30.60'	T-2008 S05°56'03"E 25.56'
T-806 N87°53'52"E 50.03'	T-1299 S71°07'49"W 15.89'	T-2009 S74°59'23"W 49.20'
T-872 S27°04'23"W 8.72'	T-1927 S01°54'20"W 24.38'	T-2010 N82°31'04"W 44.96'
T-873 S34°09'59"W 13.52'	T-1928 S71°07'49"W 15.89'	T-2011 S85°33'54"W 18.55'
T-874 S39°07'29"E 18.16'	T-1929 S69°07'17"W 30.60'	T-2012 S07°07'01"W 29.51'
T-875 S82°09'49"W 32.21'	T-1930 S47°02'07"E 13.52'	T-2013 S48°16'15"W 76.73'
T-876 S45°22'32"W 5.01'	T-1931 S38°35'44"E 22.88'	T-2014 N44°14'06"W 75.62'
T-877 S44°03'45"E 32.97'	T-1932 N88°26'52"E 40.88'	T-2015 N67°47'01"W 31.90'
T-878 S42°38'21"W 27.06'	T-1933 S59°04'36"E 20.48'	T-2016 N88°08'29"W 34.58'
T-879 S21°56'13"W 77.63'	T-1934 S13°23'57"W 39.00'	T-2017 N87°08'25"W 38.22'
T-1250 S68°25'10"W 23.82'	T-1935 N69°13'05"W 35.65'	T-2018 S77°13'09"W 31.43'
T-1251 N11°09'45"W 50.70'	T-1936 N57°42'36"W 29.74'	T-2019 N81°23'32"W 53.15'
T-1252 N77°46'02"W 38.03'	T-1937 N62°38'49"W 29.95'	T-2020 S69°42'47"W 54.73'
T-1253 N25°37'24"E 31.00'	T-1938 N61°43'38"W 44.18'	
T-1254 N02°06'22"E 41.01'	T-1939 N74°03'46"W 20.91'	
T-1255 S80°10'43"E 23.11'	T-1940 N86°45'13"W 23.06'	
T-1256 S74°45'10"E 29.78'	T-1941 N47°36'50"E 24.99'	
T-1257 N03°14'34"W 22.17'	T-1942 N20°45'36"E 29.50'	
T-1258 N83°18'34"E 27.84'	T-1943 N50°51'57"W 23.00'	
T-1259 N10°25'34"E 29.26'	T-1944 N00°17'18"W 34.61'	
T-1260 N60°19'07"E 16.58'	T-1945 N12°38'43"W 12.69'	
T-1261 S77°22'23"E 22.45'	T-1946 N16°00'55"E 40.83'	
T-1262 N05°49'09"W 43.76'	T-1947 N19°15'06"W 17.29'	
T-1263 N78°31'48"E 33.82'	T-1948 N32°48'15"E 59.01'	
T-1264 N14°07'38"W 27.98'	T-1949 N24°38'20"W 38.00'	
T-1265 N59°10'09"W 65.95'	T-1950 N46°11'05"E 5.78'	
T-1266 N79°07'51"E 15.21'	T-1951 N60°52'33"E 37.77'	
T-1267 N07°54'10"E 20.46'	T-1952 S06°26'33"E 13.05'	
T-1268 N75°32'29"E 45.86'	T-1953 S69°13'28"E 16.68'	
T-1269 S11°23'03"E 53.52'	T-1954 S05°41'00"E 16.94'	
T-1270 S85°18'05"E 25.81'	T-1955 S32°21'7"W 23.65'	
T-1271 S74°19'47"E 35.04'	T-1956 S48°23'43"E 22.61'	
T-1272 N65°57'41"E 26.73'	T-1957 S14°07'40"E 28.89'	
	T-1958 S00°55'12"E 12.47'	
	T-1959 S44°05'34"E 18.68'	
	T-1981 N31°43'15"E 30.47'	
	T-1982 N10°31'27"W 26.16'	

SHEET INDEX



= DENOTES SHEET NUMBER OF 36



(NOT TO SCALE)

CURVE TABLE

C19	CA=83°06'01"	R=50.00'	L=72.52'	LCB=S77°34'27"E	CHD=66.33'
C20	CA=51°17'04"	R=50.00'	L=44.75'	LCB=N20°32'33"E	CHD=43.27'
C23	CA=60°51'25"	R=50.00'	L=53.11'	LCB=S04°39'47"E	CHD=50.65'
C100	CA=86°42'07"	R=50.00'	L=75.66'	LCB=S00°42'42"E	CHD=68.65'
C101	CA=121°17'18"	R=50.00'	L=105.84'	LCB=S21°31'10"W	CHD=87.16'
C137	CA=45°25'50"	R=75.00'	L=59.47'	LCB=S34°29'16"E	CHD=57.92'
C157	CA=72°30'33"	R=50.00'	L=63.28'	LCB=S22°51'19"E	CHD=59.14'
C158	CA=103°31'33"	R=50.00'	L=90.34'	LCB=S85°09'44"W	CHD=78.55'
C325	CA=31°18'06"	R=325.00'	L=177.55'	LCB=S47°22'08"W	CHD=175.35'

LEGEND

(R)	DENOTES A RADIAL LINE	R	DENOTES RADIUS DISTANCE
C/L	DENOTES A CENTERLINE	L	DENOTES ARC LENGTH DISTANCE
DE	DENOTES A PRIVATE DRAINAGE EASEMENT	CA	DENOTES CENTRAL ANGLE
UE	DENOTES UTILITY EASEMENT	LCB	DENOTES LONG CHORD BEARING
LSE	DENOTES LIFT STATION EASEMENT	CHD	DENOTES CHORD DISTANCE
MCAE	DENOTES MARTIN COUNTY ACCESS EASEMENT	ORB	DENOTES OFFICIAL RECORDS BOOK
FM	DENOTES FORCEMAIN EASEMENT	DENOTES TRACT LINE OF THE PLAT OF PALM CITY FARMS PLAT BOOK 6, PAGE 42.
LME	DENOTES LAKE MAINTENANCE EASEMENT		

□	DENOTES A SET PERMANENT REFERENCE MONUMENT
○	DENOTES A 4"x4" CONCRETE MONUMENT WITH DISK (LB 7344)
●	DENOTES A 5/8" IRON ROD AND CAP (LB 7344)
⊙	DENOTES A SET PERMANENT CONTROL POINT CARRIAGE BOLT AND WASHER (LB 7344)
⊙	DENOTES A FOUND PERMANENT CONTROL POINT CARRIAGE BOLT AND WASHER

SURVEYOR'S NOTES

- THE BASE BEARING, AS SHOWN HEREON, IS N89°58'48"W ALONG THE SOUTHWEST ONE-QUARTER OF SECTION 15, TOWNSHIP 38 SOUTH, RANGE 40 EAST.
- IN THOSE INSTANCES WHERE UTILITY OR DRAINAGE STRUCTURES ARE CONSTRUCTED IN CONFLICT WITH THE PLATTED PERMANENT CONTROL POINT POSITION STRADDLERS MONUMENTED AS PERMANENT CONTROL POINTS WILL BE SET TO REFERENCE THE PLATTED POSITION.
- POINTS THAT INTERSECT CURVES ARE RADIAL UNLESS OTHERWISE NOTED.
- THIS INSTRUMENT WAS PREPARED BY WM. R. VAN CAMPEN, PROFESSIONAL SURVEYOR AND MAPPER NO. 2424, IN AND FOR THE OFFICES OF ASSOCIATED LAND SURVEYORS, INC., 4152 WEST BLUE HERON BOULEVARD, SUITE 121, RIVERA BEACH, FLORIDA, 33404.



ASSOCIATED LAND SURVEYORS, INC.
4152 W. BLUE HERON BOULEVARD—SUITE 121
RIVERA BEACH FLORIDA 33404 LB 7344
PHONE: (561) 848-2102 FAX: (561) 844-9659 EMAIL: ALLSURVEY@AOL.COM

FILE: P260PLAT

FB:	WO.NO.: P260
SCALE: 1"=60'	DATE: 1/6/2005
DWN: KVC	SHEET 13 OF 36